



BRIGHT SUNLIT ZONES IN THE HOUSE FOR INDOOR CONTAINER PLANTS

Here are areas of the house with bright sunlight for indoor container plants.

Make sure that you use this chart based on your local climate. If your climate is too hot and dry, moving the plants in shade can be helpful.

Use curtains to control the inflow of sunlight.

AREA 2

As long as it is not shaded by trees or buildings, a window facing east will get about half a day of sunlight. You can place your fruit and vegetable containers in this location.

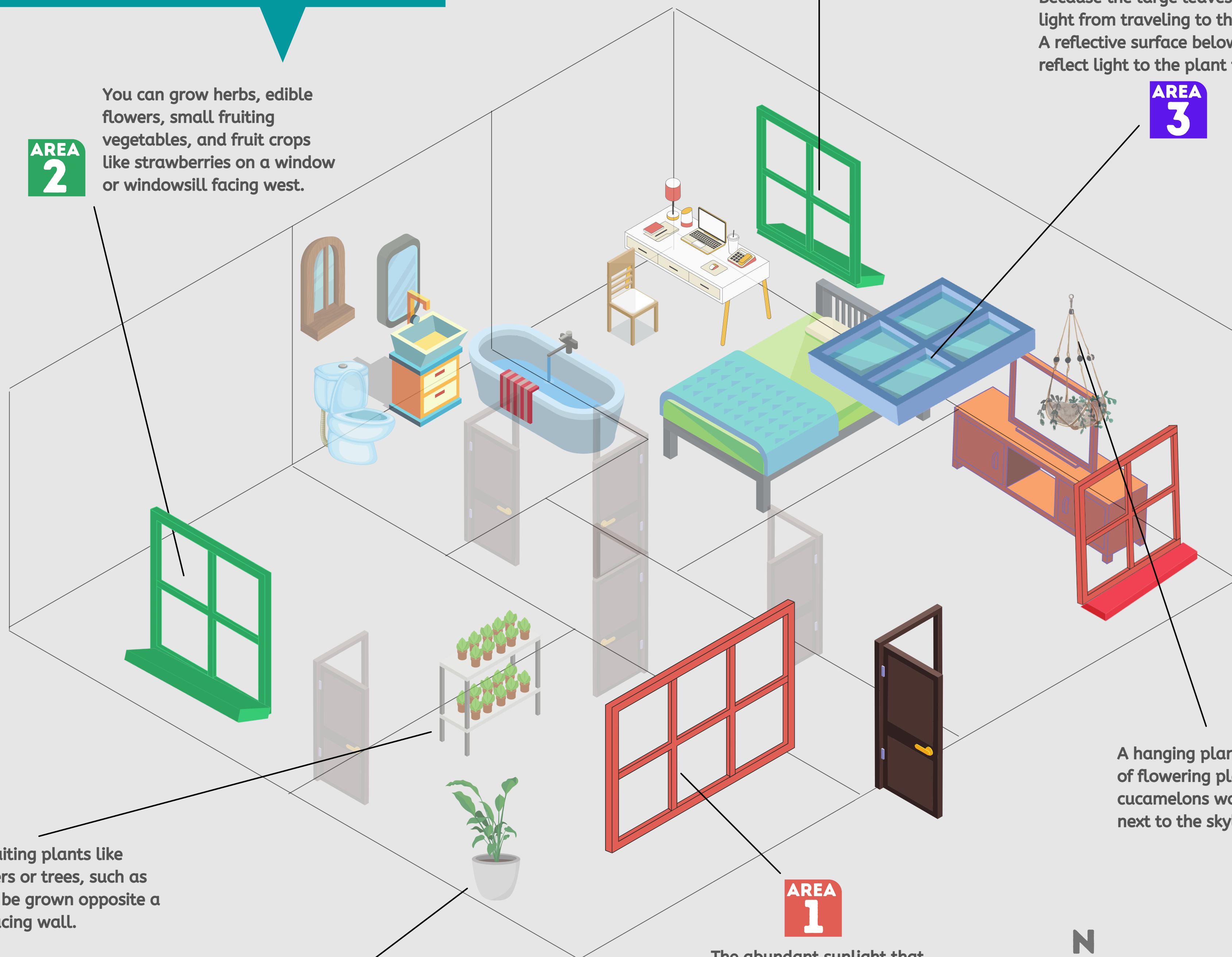
When planting plants indoors, skylights can be a great option to provide uniform and effective overhead light.

TIP: Place the planter/container on a surface that reflects light (white or light colored surface) if the leaves of the plant are large. Because the large leaves will prevent the light from traveling to the rest of the plant. A reflective surface below the plant will help reflect light to the plant from the bottom.

AREA 3

AREA 2

You can grow herbs, edible flowers, small fruiting vegetables, and fruit crops like strawberries on a window or windowsill facing west.



Large fruiting plants like cucumbers or trees, such as figs, can be grown opposite a south-facing wall.

Fruiting vegetable plants such as tomatoes, peppers, eggplants, and cucumbers thrive best in a south-facing room with a large window.

AREA 1

The abundant sunlight that pours through a south-facing window in summer is perfect for growing edible flowers, fruiting vegetables, and most herbs and fruits.

A hanging planter or container of flowering plant such as cucamelons would love a spot next to the skylight.

